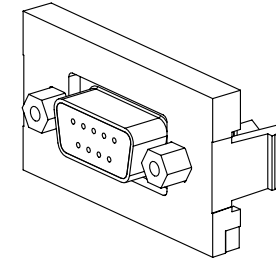
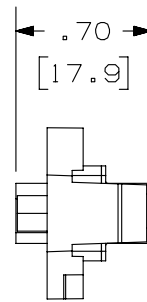
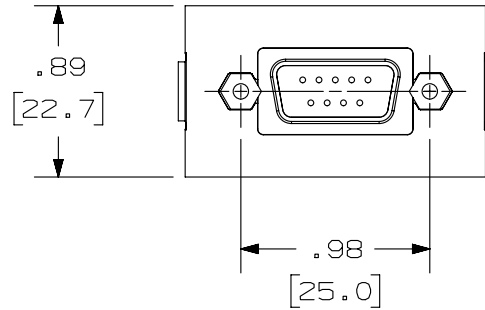
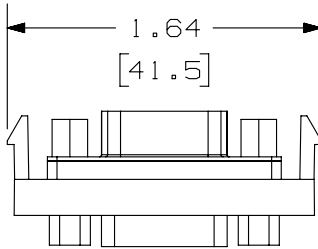





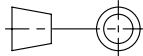
THIS COPY IS PROVIDED ON A RESTRICTED BASIS AND IS NOT TO BE USED IN ANY WAY DETRIMENTAL TO THE INTERESTS OF PANDUIT CORP.

	PANDUIT P/N	WEIGHT
A	CHD9C**	.29 LB/10 PCS (132.3 g/10 PCS)
B	IAPHD9CWH	

NOTES:

1. SEE CURRENT CATALOG FOR ADDITIONAL PART NUMBER SUFFIXES TO INDICATE COLOR AND OR PACKAGE QUANTITY.
2. SEE CATALOG FOR COMPLETE LIST OF PARTS APPLICABLE FOR USE WITH THIS PART.
3. DIMENSIONS IN PARENTHESES ARE IN METRIC.
4. PART TO WORK WITH ALL PANDUIT FACEPLATE FRAMES.



PART NUMBER		SEE TABLE	
TITLE		 9 PIN SVGA 1/3 INSERT COUPLER	
		CUSTOMER DRAWING	
ITEM REVISION NAME		M01095AA/01	
DATASET FILE NAME		M01095AA_DC06/01D	
UNLESS OTHERWISE SPECIFIED, DIMENSIONAL TOLERANCES ARE: IN [mm]		MATERIAL:	
.x ± .xxx ± .010 [.3]		DRAWING NUMBER:	
.xx ± .03 [.8] ANGES ±		01095-06 	
		THIRD ANGLE PROJECTION	
DRAWN BY	DATE	CHK	SCALE
JSP	1-26-01	PBD	NONE
SHT 1 OF 1		A	

REV	DATE	BY	CHK	APR	DESCRIPTION	ECN
3	7-31-14	BJN	JSP	MMR	C. REMOVED "MINI-COM" FROM TITLE D. UPDATED TITLE BLOCK	01095-06
2	6-6-11	BJN	JSP	JSP	B. ADDED SUPPLEMENTAL P/N IAPHD9CWH	01095-06
1	2-16-01	JSP	PBD	PBD	A. ADDED "C" TO PART NO.	01095-06
R	1-26-01	JSP	PBD	PBD	RELEASED TO PRODUCTION	01095-06

D10100DA/14