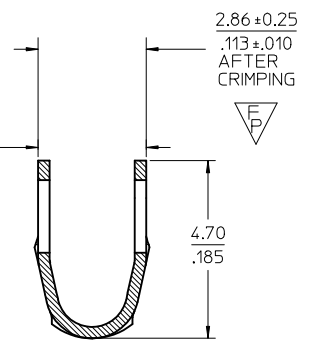
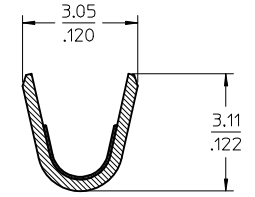
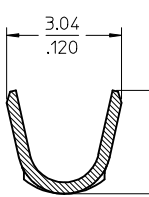
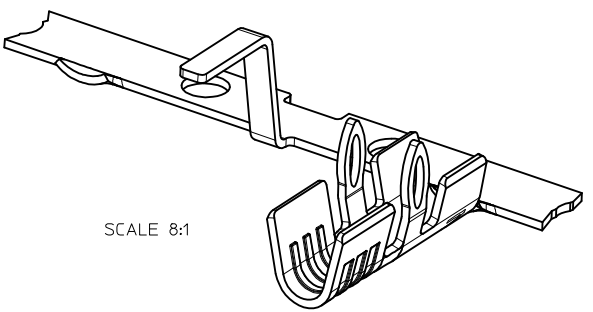
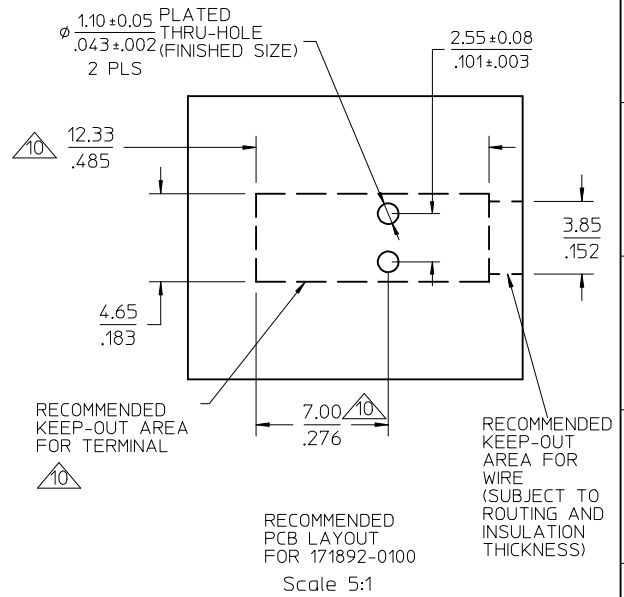
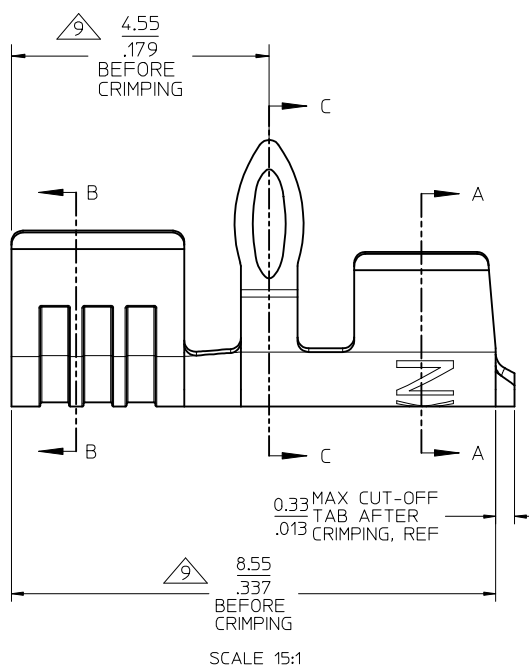


MATERIAL NUMBER	MATERIAL	PLATING	COND SIZE	MAX INS DIA	MAX PCB THICKNESS
171892-0100	BRASS	RMT	16~18 AWG	2.31 / .091 (UL1007)	1.57 / .062

LEGEND: 171892-WXYZ

W = PLATING
 (0 = REFLOWED MATTE TIN)
 X = CRIMP SIZE
 (1 = 16~18AWG, THIN (UL1007) INSUL / .062 PCB)
 YZ = NOT USED
 (00)

- NOTES:
- MATERIAL: BRASS
 - FINISH:
RMT = OVERALL REFLOWED MATTE TIN, 0.00152 / .000060 MIN OVER 0.00127 / .000050 MIN NICKEL, OVERALL
 - PRODUCT SPECIFICATION: PS-171892-001
 - PACKAGING INFORMATION: PK-171892-001
3,000 PER 24" CARDBOARD REEL
 - MATES WITH: N/A (FOR SOLDERING TO PCB)
 - THIS PART CONFORMS TO CLASS B REQUIREMENTS OF COSMETIC SPEC PS-45499-002.
 - TERMINAL DESIGNED FOR THRU-HOLE SOLDERING, NOT FOR PRESS-FIT. INTERFERENCE FIT PROVIDES RETENTION OF TERMINAL TO BOARD DURING SOLDERING ONLY.
 - MAX INSULATION DIAMETER AND MAX PCB THICKNESS SHOWN ARE GUIDELINES TO PRODUCE 0.50 / .020 OR MORE SOLDER-TAIL PROTRUSION.
 - CRIMPING PROCESS CAUSES TERMINAL GROWTH OF APPROXIMATELY 1.0 / .04.
 - INCLUDING TERMINAL GROWTH AND WIRE BRUSH LENGTH.



ADD PS & PK EC NO: UCP2013-5022 DRWN: BANDERSON 2013/05/22 CHKD: SSOUSEK 2013/05/22 APPR: FSMITH 2013/06/11 REV: A1	QUALITY SYMBOLS	GENERAL TOLERANCES (UNLESS SPECIFIED)	DIMENSION STYLE	SCALE	DESIGN UNITS	THIRD ANGLE PROJECTION
	▽=0	mm INCH	MM/IN	10:1	METRIC	☉
	▽=0	4 PLACES ± --- ± ---	DRAWN BY DATE	TITLE		
	▽=1	3 PLACES ± --- ± .010	BANDERSON 2013/02/04	SOLDERRIGHT RIGHT-ANGLE BOARD-IN TERMINAL		
		2 PLACES ± 0.25 ± .014	CHECKED BY DATE	molex		
	1 PLACE ± 0.35 ± ---	SSOUSEK 2013/05/01	SD-171892-001			
	0 PLACE ± --- ± ---	APPROVED BY DATE	SHEET NO.			
		FSMITH 2013/05/13	1 OF 1			
			DOCUMENT NO.			
			SEE CHART			
			THIS DRAWING CONTAINS INFORMATION THAT IS PROPRIETARY TO MOLEX INCORPORATED AND SHOULD NOT BE USED WITHOUT WRITTEN PERMISSION			